

# Strategic approach of the Molonglo Conservation Group

VISION	We seek to achieve	A healthy, resilient and productive landscape with diverse, interconnected ecosystems and communities		
MISSION	What we do	We facilitate the development, design and delivery of best practice natural resource and landscape management programs		
	How we do it	We work with rural and urban landholders and the wider community to transform capabilities and facilitate cooperative, adaptive inter-connected landscape management		
PROGRAMS	We organise around three core programs	<p><b>Landscapes</b></p> <p>We design, manage and facilitate programs to improve the health, resilience and productivity of natural and managed landscapes</p>	<p><b>Knowledge</b></p> <p>We improve the understanding and awareness of our landscapes and community capabilities</p>	<p><b>Capability</b></p> <p>We identify, harness and facilitate best practice skills and knowledge to enhance the care and management of landscapes</p>
OUTCOMES	Our focus on outcomes underpins program design	<p><b>Inter-Connections</b></p> <p>Our natural resource programs connect ecosystems and communities, and integrate science with Aboriginal biocultural knowledge</p>	<p><b>Landscape planning</b></p> <p>We leverage knowledge with a focus on outcomes in strategic design of inter-connected programs for landscape planning</p>	<p><b>Sustaining resources</b></p> <p>We advocate for outcomes focused programs across the landscape that draw on diversified funding and resources for NRM</p>
INDICATORS	We measure outcomes to improve performance	<p><b>On-ground</b></p> <p>Our programs deliver increased ecosystem health and resilience measured through species, site and ecosystem metrics</p>	<p><b>Awareness</b></p> <p>Understanding and capability is developed of landscape components, functioning, threats and best practice management approaches</p>	<p><b>Networks</b></p> <p>We engage with a breadth and depth of stakeholders, communities, funders and partners in delivering landscape planning and management</p>
CAPABILITIES	How we excel	<p><b>Leadership</b></p> <p>Our strong outcomes focus and capability are underpinned by breadth of vision, knowledge, adaptive capacity, creativity, empathy and advocacy skills</p>	<p><b>Understanding</b></p> <p>We network with multiple jurisdictions, organisations and communities, harnessing leading NRM science and local knowledge to develop, design and deliver NRM programs</p>	<p><b>Engagement</b></p> <p>Our professionalism and communication skills are critical abilities with which we engage with stakeholders, communities and funders</p>

# ABOUT OUR STRATEGIC APPROACH

We coordinate, develop, design and deliver adaptive, inter-connected land management programs across the Southern Tablelands of NSW and the ACT. We use diversified funding streams to assist us to

- broker cooperative management and stewardship,
- implement programs that enhance landscape health and resilience,
- connect the region's landscape management stakeholders and partners, and
- build knowledge and stakeholder capabilities.

Our vision is to achieve a healthy, resilient and productive landscape with diverse, interconnected ecosystems and communities. We work across rural, conservation, urban and peri-urban landscapes.

## Our Program Approach

A program is a coherent set of initiatives that involves a long-term commitment to specific actions to achieve lasting impact at a broad scale on the underlying causes of natural resource degradation. This goes beyond the scope of individual projects to achieve lasting positive changes. As a fundamental principle, you do not 'govern project management'—you govern the organisation that undertakes projects as a part of its business.

Our **Landscapes** program is designed to achieve landscape-scale outcomes for interconnection of people and environment across the southern tablelands. The program delivers as core services:

- Cross-border Policy and Management
  - grant applications, climate adaptation strategic mapping, environment and heritage assessments and cross-border partnerships, monitoring and evaluation, NRM program design and management, regional and agricultural economics, scientific writing and editing, social and economic impact assessment; and
- Interconnected Landscape management
  - research and technology, NRM science, rural productivity, Aboriginal Caring for Country

Our **Knowledge** program is designed to build capacity for Landscape planning, an outcome that delivers as support services:

- Rural Landscape Management

- Conservation Agreements, field sampling and analysis, flora and fauna management, habitat value of trees, landscape planning and restoration,
- NRM Technologies
  - Bio-cultural Aboriginal knowledge, GIS mapping, soil landscape mapping, and science and salinity management; and
- Citizen Science (Waterwatch and Vegwatch).

Our **Capability** program is designed to deliver an outcome of sustaining resources, delivering as core services:

- Management of programs
  - community engagement, ecological connectivity, sustainable landscape management, waterway health;

and as a support service:

- Community Engagement
  - Brokering stakeholder partnerships, facilitate forums and consultation and submissions and volunteer management; and
- Traditional Aboriginal Culture
  - Aboriginal plant food species, workshops and walks, partnerships with the Aboriginal community.

(Visit our 'Programs and Projects' page to see how this works in practice)

## Our origins in the Molonglo catchment

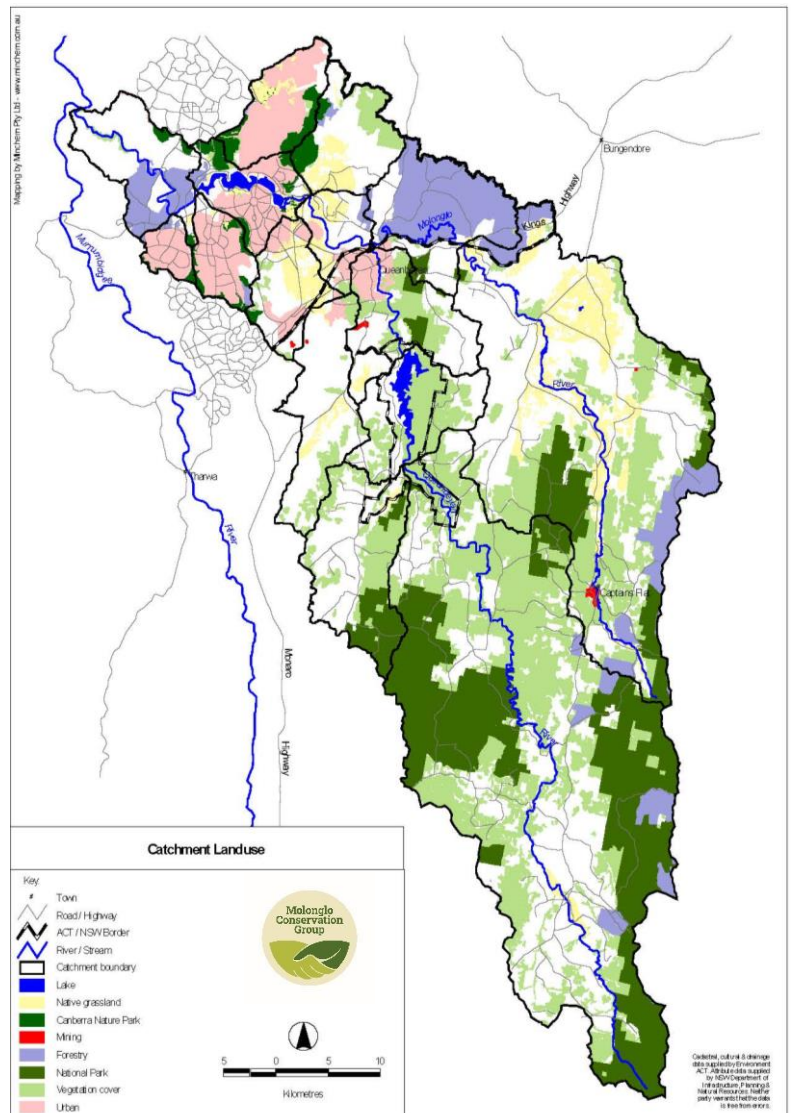
The Molonglo catchment comprises approximately 212,000 ha within the Murrumbidgee catchment in south-eastern NSW and the ACT. It includes all of the land that drains into the Molonglo River and Lake Burley Griffin, including the Queanbeyan River, and all the tributaries. The catchment encompasses parts of the Queanbeyan-Palerang Regional Council and Snowy-Monaro Regional Council, and part of the ACT. Included within the boundary is the entire city of Queanbeyan and a portion of the central suburbs of Canberra.

## Our Regional Approach

Our cross-border location underlies our regional focus and significant skill and experience in coordinating on-ground projects in the ACT and NSW. We are skilled in designing and planning our projects to suit the regional diversity in governance, landscapes and community needs. Our regional programs were initiated historically in landscapes and localities within the Molonglo catchment, but the catchment is diverse—national parks, rural enterprises, peri-urban activities, suburban and high density urban. Our history has enabled our capability—we tailor our programs to address local needs and regional outcomes.

We have strong community roots as a regional coordinator of local Landcare and Park care groups in the Molonglo Catchment. We broker cooperative management beyond the catchment boundaries so that member groups and other key stakeholders may benefit from connections made through collaborative regional projects in support of our program delivery. We work across rural, conservation, peri-urban and urban landscapes.

Our capability strength is in on-ground projects involving revegetation, erosion control, weed control, water quality, hydrogeology, and catchment management – as well as encouraging stewardship facilitated through education, community engagement and extension work. We have a



strong history in delivering projects for riparian repair, creating or enhancing landscape-scale ecological and biodiversity corridors, and enhancing sustainable rural landscapes.

By taking a regional approach, we aim for long-term outcomes with large-scale impact. We recognise the importance of the regional landscapes that neighbour and overlap the Molonglo catchment. Our foundation catchment members and stakeholders within the broader landscape benefit from the networks we facilitate, linking local landholders and managers to neighbouring regions across the Southern Tablelands for the purposes of connecting landscapes, sharing knowledge and building capability. Our strong collaborative relationship with Queanbeyan Palerang Regional Council and SE NSW Local Land Services helps us generate stewardship outcomes while delivering NRM projects. For example, our Burra erosion demonstration site project brought together SE Local Land Services NRM experts from Goulburn, Yass, Braidwood and provided workshops for local Landcare Groups from Burra and Royalla.

## Landscape-scale programs

We have refined the scope of our landscape-scale programs by developing **an inter-connected landscape management framework (ILM)** to enhance our programs through the introduction of ecology, soils-hydrogeology, mapping, and Aboriginal cultural land management, research and technology for climate adaptation. We aim to tailor our inter-connected approach, environmental assessments and project design and planning. We also aim to strengthen collaborative stewardship by contributing diverse specialist knowledge and providing for a greater geographical range of program delivery. The scale of socio-ecological outcomes will increase as connections between neighbouring regions strengthen, relationships with regional stakeholders evolve, and collaborative partnerships between public and private landholders and managers are realised.

## Identifying the Stakeholders

The objective of cooperative management for our vision of a healthy, resilient and productive landscape with diverse, interconnected ecosystems and communities is to negotiate collaborative relationships that contribute to a strategy that connects public and private lands and improves the sustainability of rural landscapes. Spatial analysis is required to align the vision with stakeholder objectives for the delivery of multi-jurisdictional on-ground projects. Mapping the role of social and ecological landscape aspects will help the Group to identify opportunities for strategic stakeholder partnerships. Collaborative partnerships with SE Local Land Services and local government regional councils are particularly useful in connecting public and private lands across the Southern Tablelands.