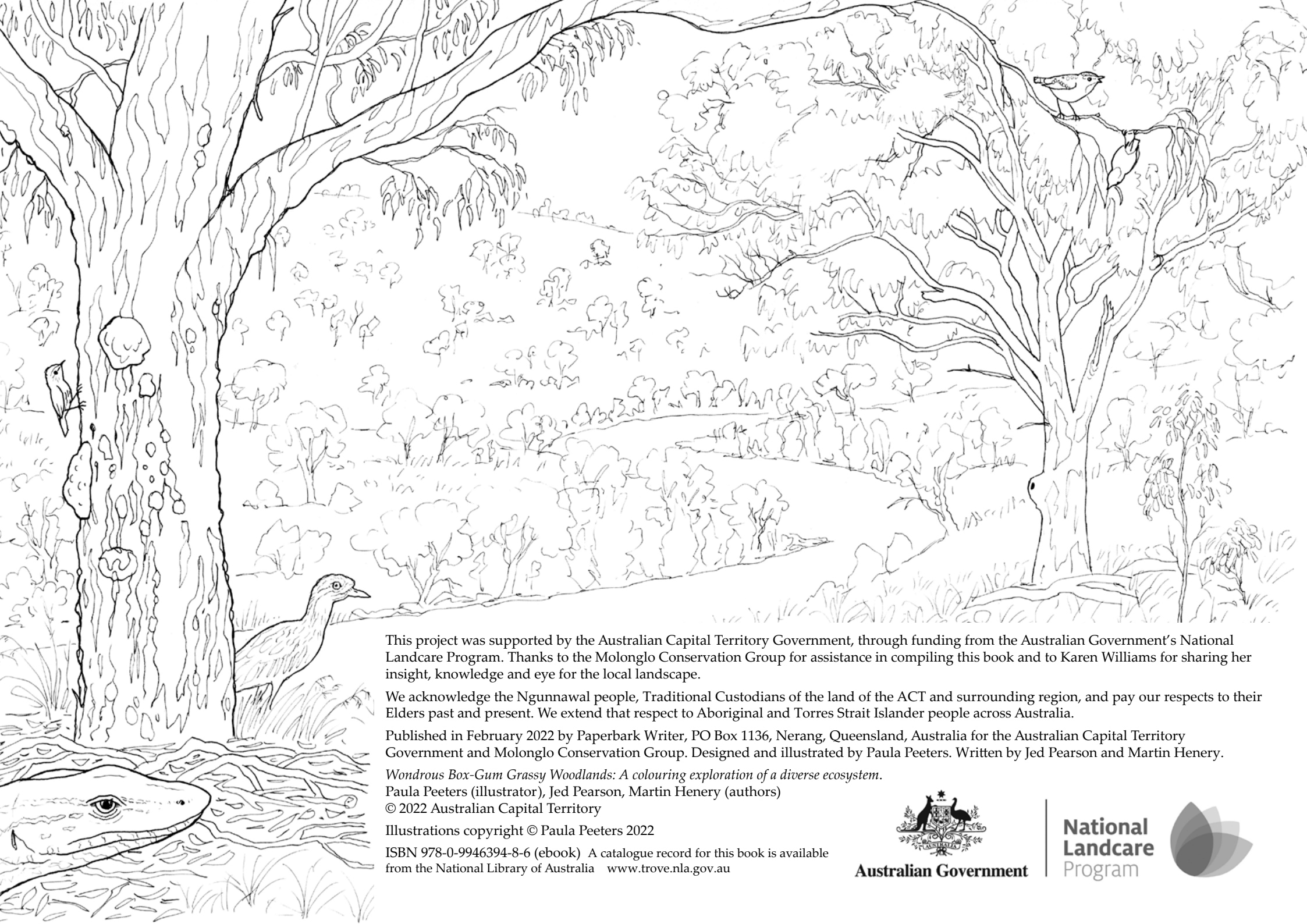


# Wondrous Box-Gum Grassy Woodlands

A colouring exploration of a diverse ecosystem

Paula Peeters, Jed Pearson and Martin Henery



This project was supported by the Australian Capital Territory Government, through funding from the Australian Government's National Landcare Program. Thanks to the Molonglo Conservation Group for assistance in compiling this book and to Karen Williams for sharing her insight, knowledge and eye for the local landscape.

We acknowledge the Ngunnawal people, Traditional Custodians of the land of the ACT and surrounding region, and pay our respects to their Elders past and present. We extend that respect to Aboriginal and Torres Strait Islander people across Australia.

Published in February 2022 by Paperbark Writer, PO Box 1136, Nerang, Queensland, Australia for the Australian Capital Territory Government and Molonglo Conservation Group. Designed and illustrated by Paula Peeters. Written by Jed Pearson and Martin Henery.

*Wondrous Box-Gum Grassy Woodlands: A colouring exploration of a diverse ecosystem.*

Paula Peeters (illustrator), Jed Pearson, Martin Henery (authors)

© 2022 Australian Capital Territory

Illustrations copyright © Paula Peeters 2022

ISBN 978-0-9946394-8-6 (ebook) A catalogue record for this book is available from the National Library of Australia [www.trove.nla.gov.au](http://www.trove.nla.gov.au)



**Australian Government**

**National  
Landcare  
Program**

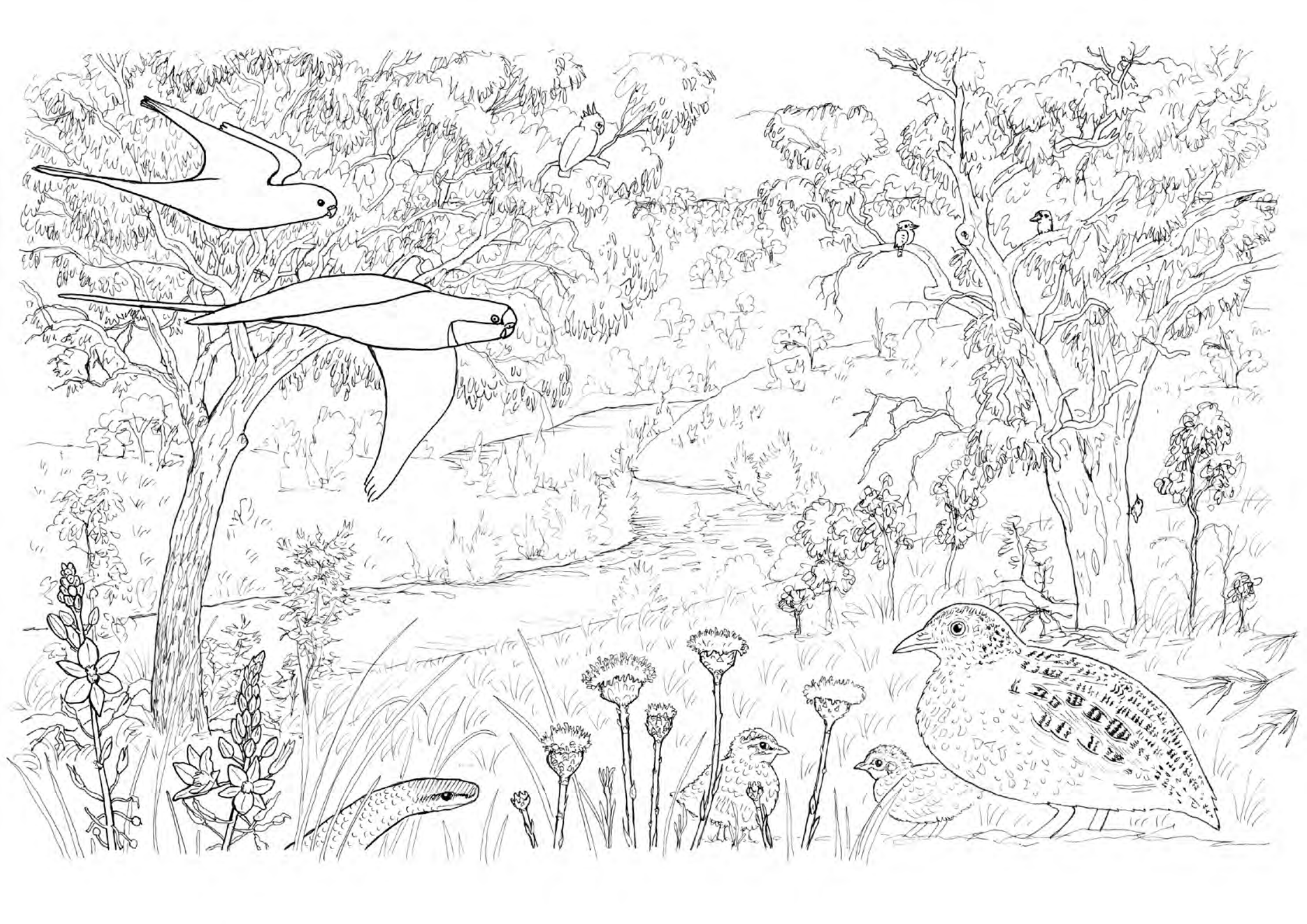



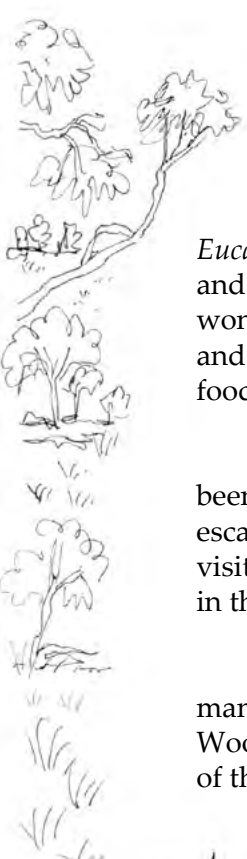


# **Wondrous Box-Gum Grassy Woodlands**

**A colouring exploration of a diverse ecosystem**

**Paula Peeters, Jed Pearson and Martin Henery**



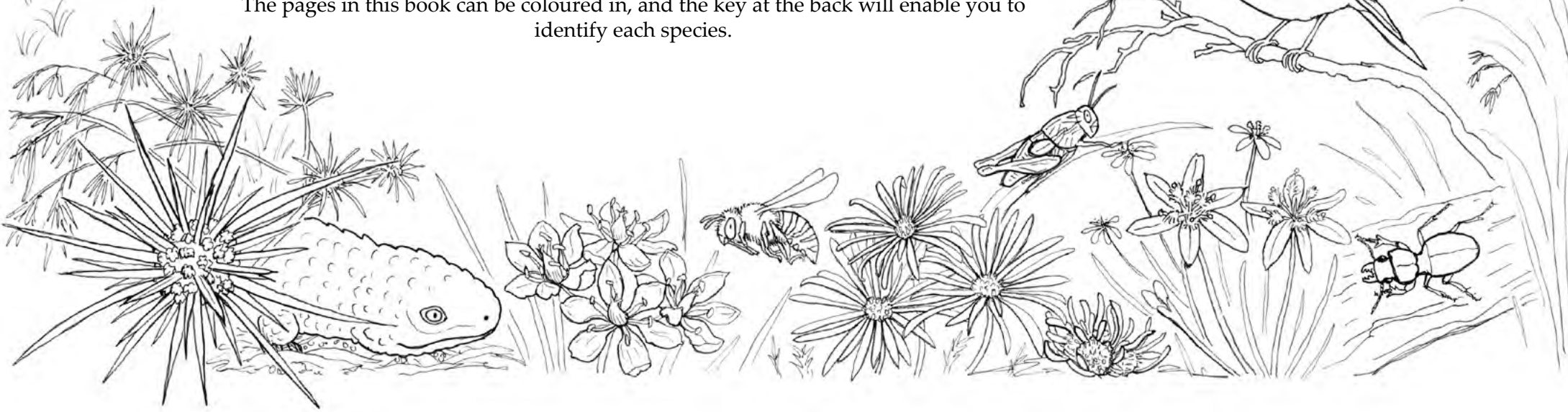
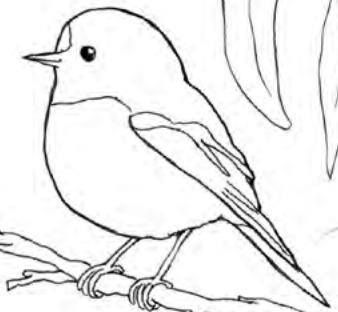


Australia's Box-Gum Grassy Woodlands are a plant community characterised by a canopy of large *Eucalyptus* trees, few mid-storey shrubs and a high diversity of plants in the ground layer with many grasses and herbs. Much more than just grass and trees, Box-Gum Grassy Woodlands also provide habitat for a wondrous variety of mammal, bird, reptile, frog and invertebrate species. Tree hollows, fallen logs, branches and leaves, and seeding native grasses are just some of the elements that provide important microhabitats and food for fauna.

Once widespread through Queensland, New South Wales and Victoria, Box-Gum Grassy Woodlands have been extensively cleared for agriculture and modified for livestock grazing. Only small remnants which have escaped these impacts remain in near-original condition. In spring, as plants in the ground layer start to flower, visiting these special places provides a glimpse of the incredible natural beauty and diversity that can be found in this community.

Box-Gum Grassy Woodlands still face threats. By encouraging landholders and the community to manage and care for what little remains, and restoring degraded areas, we can ensure that Box-Gum Grassy Woodlands and their inhabitants survive into the future. The illustrations in this book feature the inhabitants of this beautiful ecosystem we are trying to conserve.

The pages in this book can be coloured in, and the key at the back will enable you to identify each species.





Box-gum Grassy Woodlands are home to many plant species.  
In spring an abundance of flowers provide food for insect pollinators like bees and butterflies.



Can you spot the Australian Painted Lady butterfly?



As eucalypts get older and slowly develop into big trees, they form hollows in the trunk and large branches.





Possums, birds, insects and many other animals make their homes high in the canopy and in the hollows of the old eucalyptus trees. Can you find the Spotted Pardalote?



An incredible variety of birds forage for food and make their nests in woodlands. They use different areas of habitat including shrubs and saplings, dead trees, the ground layer, tree bark and the *Eucalyptus* canopy.



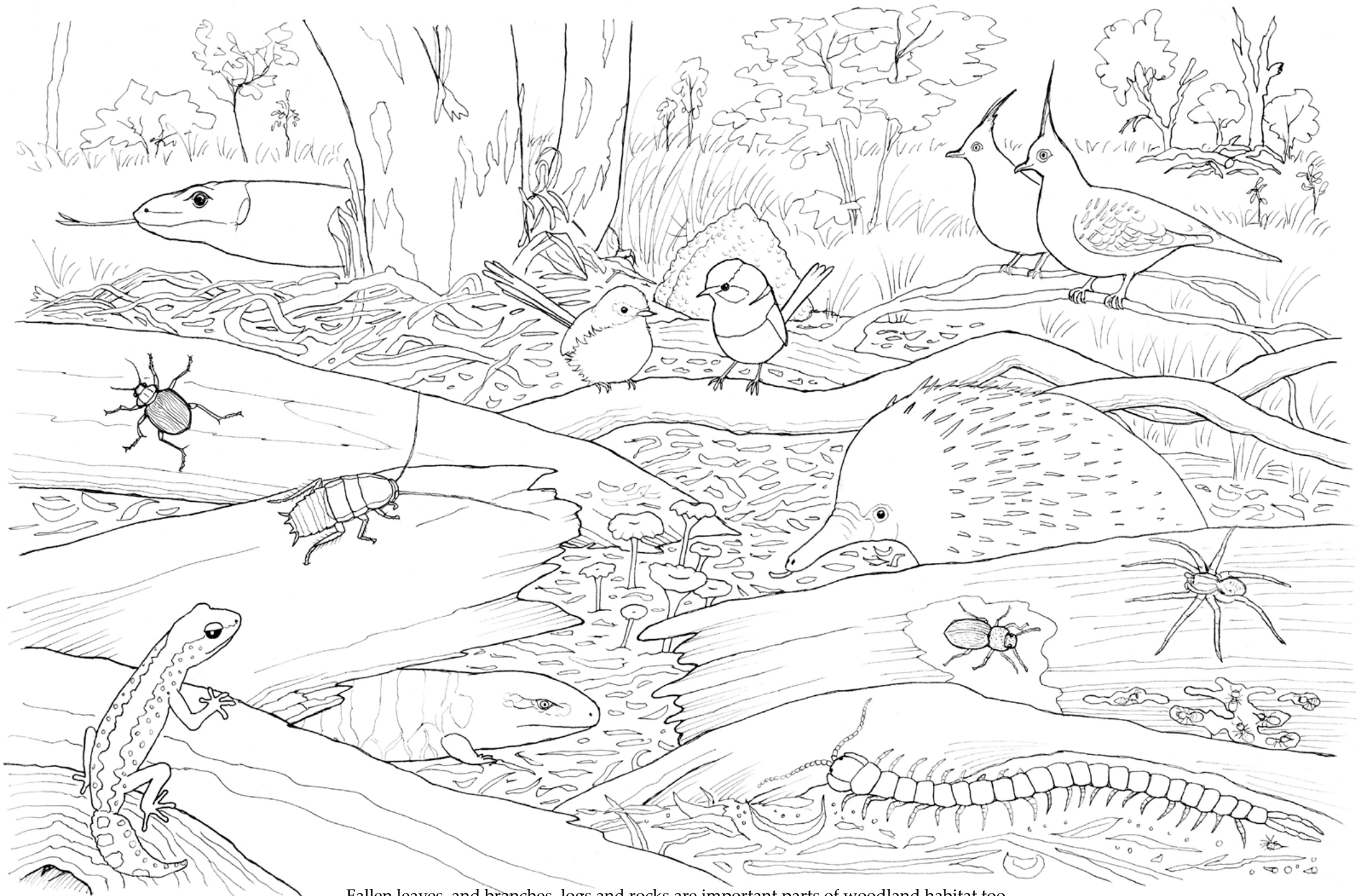
The loss of woodland habitat means many of our woodland birds are threatened or declining. Can you spot the Speckled Warbler?



Many woodland creatures make their home in the undergrowth or burrow underground. The Pink-tailed Worm-lizard burrows under surface rocks to keep out of sight of predators and warm up as the rocks absorb heat from the sun.



People can undertake various activities to protect woodlands including planting trees, removing weeds and scientific monitoring to ensure woodlands continue to remain diverse and healthy.



Fallen leaves, and branches, logs and rocks are important parts of woodland habitat too.  
Reptiles, birds, mammals and invertebrates hide under rocks and logs, and forage for food amongst the fallen leaves.



Aboriginal people have been managing grassy woodlands for thousands of years. Occasional, low intensity fires are necessary to keep woodlands healthy. Burning grass creates space for other plant species to regenerate.



Apostlebird  
*Struthidea cinerea*  
Find 3



Australian Magpie  
*Gymnorhina tibicen*  
Find 1



Australian Owlet-nightjar  
*Aegotheles cristatus*  
Find 1



Barking Owl  
*Ninox connivens*  
Find 1



Brown Treecreeper  
*Climacteris picumnus*  
Find 5



Bush Stone-curlew  
*Burhinus grallarius*  
Find 4



Crested Pigeon  
*Ocyphaps lophotes*  
Find 4



Crested Shrike-tit  
*Falcunculus frontatus*  
Find 2



Diamond Firetail  
*Stagonopleura guttata*  
Find 2



Eastern Rosella  
*Platycercus eximius*  
Find 2



Flame Robin  
*Petroica phoenicea*  
Find 1



Grey Shrike-thrush  
*Colluricincla harmonica*  
Find 1



Laughing Kookaburra  
*Dacelo novaeguineae*  
Find 2



Little Lorikeet  
*Parpopsitta pusilla*  
Find 1



Mistletoebird  
*Dicaeum hirundinaceum*  
Find 1



Painted Button-quail  
*Turnix varius*  
Find 5



Regent Honeyeater  
*Anthochaera phrygia*  
Find 1



Restless Flycatcher  
*Myiagra inquieta*  
Find 1



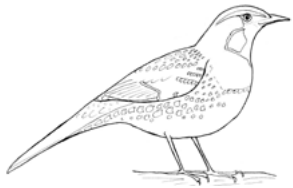
Scarlet Robin  
*Petroica boodang*  
Find 5



Speckled Warbler  
*Chthonicola sagittata*  
Find 1



Spotted Pardalote  
*Pardalotus punctatus*  
Find 5



Spotted Quail-thrush  
*Cinlosoma punctatum*  
Find 1



Southern Boobook  
*Ninox boobook*  
Find 1



Southern Whiteface  
*Aphelocephala leucopsis*  
Find 2



Striated Pardalote  
*Pardalotus striatus*  
Find 1



Superb Fairy-wren  
*Malurus cyaneus*  
Find 2



Superb Parrot  
*Polytelis swainsonii*  
Find 6



Sulphur-crested Cockatoo  
*Cacatua galerita*  
Find 2



Tawny Frogmouth  
*Podargus strigoides*  
Find 3



Varied Sittella  
*Daphoenositta chrysoptera*  
Find 6



White-naped Honeyeater  
*Melithreptus lunatus*  
Find 1



White-winged Chough  
*Corcorax melanorhamphos*  
Find 2



Yellow-faced Honeyeater  
*Caligavis chrysops*  
Find 1



Yellow-rumped  
Thornbill  
*Acanthiza chrysorrhoa*  
Find 2





Earthworm  
Find 1



Centipede  
Find 2



Land Snail  
Find 1



Huntsman Spider  
Family Sparassidae  
Find 1



Wolf Spider  
*Tasmanocosa godeffroyi*  
Find 1



Trapdoor Spider  
Find 1



Scorpion  
Find 1



Psyllids  
Order Hemiptera  
Find lots



Bug  
Order Hemiptera  
Find 1



Cicada  
Order Hemiptera  
Find 1



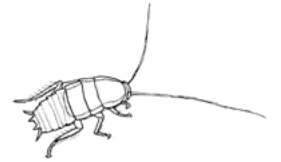
Violet-winged Stick Insect  
*Didymuria violescens*  
Find 1



Termites  
Find 7



Ant  
Find 12



Cockroach  
*Drymaplaneta semivittata*  
Find 1



Perunga Grasshopper  
*Perunga ochracea*  
Find 1



Beetle larvae  
Order Coleoptera  
Find 2



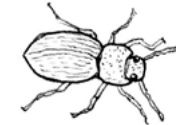
Carabid Beetle  
*Calosoma schayeri*  
Find 1



Family Carabidae  
Find 1



Christmas Beetle  
*Anoplognathus pallidicollis*  
Find 1



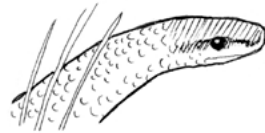
Darkling Beetle  
*Adelium porcatum*  
Find 1



Weevil  
*Cubicorhynchus* sp.  
Find 1



Caterpillar  
Order Lepidoptera  
Find 2



Dwyer's Snake  
*Parasuta dwyeri*  
Find 1



Three-Toed Earless Skink  
*Hemiergis decresiensis*  
Find 1



Pink-tailed Worm-lizard  
*Aprasia parapulchella*  
Find 1



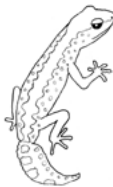
Heath Monitor  
*Varanus rosenbergi*  
Find 4



Eastern Blue Tongue  
*Tiliqua scincoides*  
Find 1



Shingleback  
*Tiliqua rugosa*  
Find 1



Gecko  
*Diplodactylus vittatus*  
Find 1



Common Brushtail Possum  
*Trichosurus vulpecula*  
Find 2



Human  
*Homo sapiens*  
Find 13



Short-beaked Echidna  
*Tachyglossus aculeatus*  
Find 1



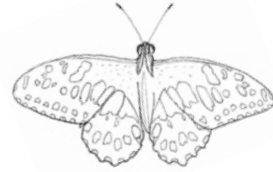
Squirrel Glider  
*Petaurus norfolcensis*  
Find 3



Blue-banded Bee  
Find 1



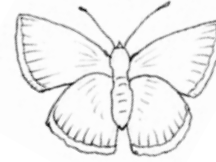
Australian  
Painted Lady  
*Vanessa kershawi*  
Find 1



Chequered Swallowtail  
*Papilio demoleus*  
Find 1



Common Brown  
*Heteronympha merope*  
Find 1



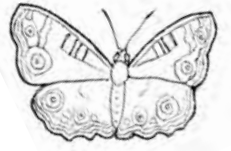
Common Grass-blue  
*Zizina otis*  
Find 1



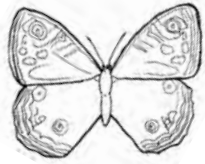
Klug's Xenica  
*Geitoneura klugii*  
Find 1



Long-tailed Pea-blue  
*Lampides boeticus*  
Find 1



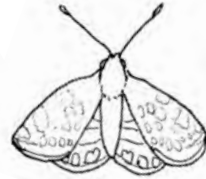
Meadow Argus  
*Junonia villida*  
Find 1



Ringed Xenica  
*Geitoneura acantha*  
Find 1



Shouldered Brown  
*Heteronympha penelope*  
Find 1



Golden Sun Moth  
*Synemon plana*  
Find 1



Fungi  
*Lichenomphalia chromacea*  
Find 7



Silver Wattle  
*Acacia dealbata*  
Find lots



Austral Bugle  
*Ajuga australis*  
Find on one page



Mistletoe  
*Amyema sp.*  
Find on one page



Chocolate Lily  
*Arthropodium fimbriatum*  
Find on one page



Vanilla Lily  
*Arthropodium milleflorum*  
Find on 3 pages



Slender Speargrass  
*Austrostipa scabra subsp.  
falcata*  
Find on 2 pages



*Bossiaea prostrata*  
Find on one page



Daphne Heath  
*Brachyloma daphnoides*  
Find on one page



Leafy Daisy  
*Brachyscome rigidula*  
Find on one page



Bulbine Lily  
*Bulbine bulbosa*  
Find on 3 pages



Milkmaids  
*Burchardia umbellata*  
Find on one page



Sweet Bursaria  
*Bursaria spinosa*  
Find on one page



Lemon Beautyheads  
*Calocephalus citreus*  
Find on 3 pages



Rock Fern  
*Cheilanthes sp.*  
Find on one page



Common Everlasting  
*Chrysocephalum  
apiculatum*  
Find on one page



Yellow Buttons  
*Chrysocephalum  
semipapposum*  
Find on one page



Billy Buttons  
*Craspedia variabilis*  
Find on one page



Emu Foot  
*Cullen tenax*  
Find on one page



Black-Anther Flax-Lily  
*Dianella revoluta*  
Find on two pages



Snake Orchid  
*Diuris chryseopsis*  
Find on one page



Yellow Box  
*Eucalyptus melliodora*  
Find lots



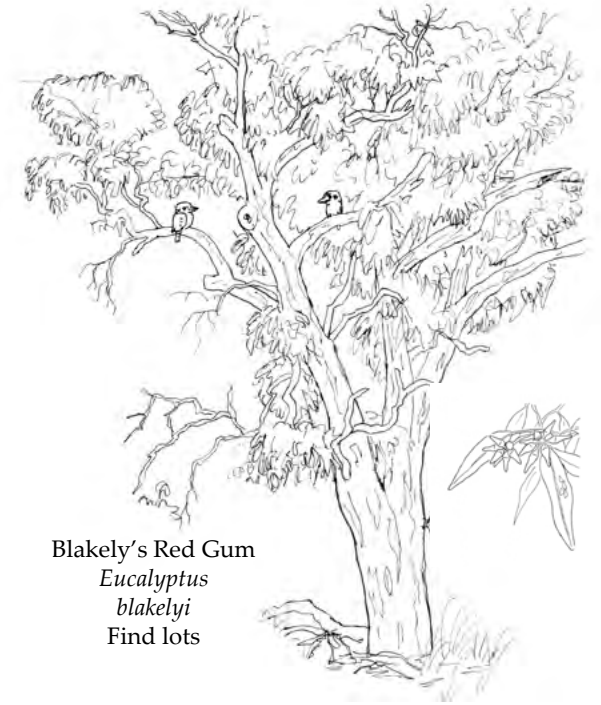
Blue Devil  
*Eryngium ovinum*  
Find on 3 pages



Twining Glycine  
*Glycine clandestina*  
Find on two pages



Ivy Goodenia  
*Goodenia hederacea* subsp.  
*hederacea*  
Find on one page



Blakely's Red Gum  
*Eucalyptus blakelyi*  
Find lots



*Isoetopsis graminifolia*  
Find on one page



Hoary Sunray  
*Leucochrysum albicans*  
Find on one page



Wattle  
Mat-Rush  
*Lomandra filiformis*  
Find on one page



Australian Trefoil  
*Lotus australis*  
Find on one page



Urn Heath  
*Melichrus urceolatus*  
Find on one page



Murnong  
*Microseris lanceolata*  
Find on one page



Austral  
Stork's-bill  
*Pelargonium australe*  
Find on one page



Variable Plantain  
*Plantago varia*  
Find on one page



Low Bush-Pea  
*Pultenaea subspicata*  
Find on one page



Button Wrinklewort  
*Rutidosus leptorhynchoides*  
Find on one page



Short Wallaby-grass  
*Rytidosperma carphoides*  
Find on one page



Smooth  
Wallaby-grass  
*Rytidosperma laeve*  
Find on one page



Corrugated Sida  
*Sida corrugata*  
Find on one page



Smooth  
Solenogyne  
*Solenogyne dominii*  
Find on one page



Behr's Swainson-Pea  
*Swainsona behriana*  
Find on one page



Mountain  
Swainson-Pea  
*Swainsona recta*  
Find on one page



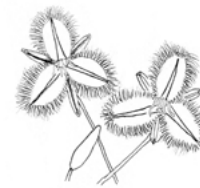
Creamy Candles  
*Stackhousia monogyna*  
Find on one page



Slender Sun Orchid  
*Thelymitra pauciflora*  
Find on one page



Kangaroo Grass  
*Themeda australis*  
Find lots



Common Fringe-lily  
*Thysanotus tuberosus*  
Find on 3 pages



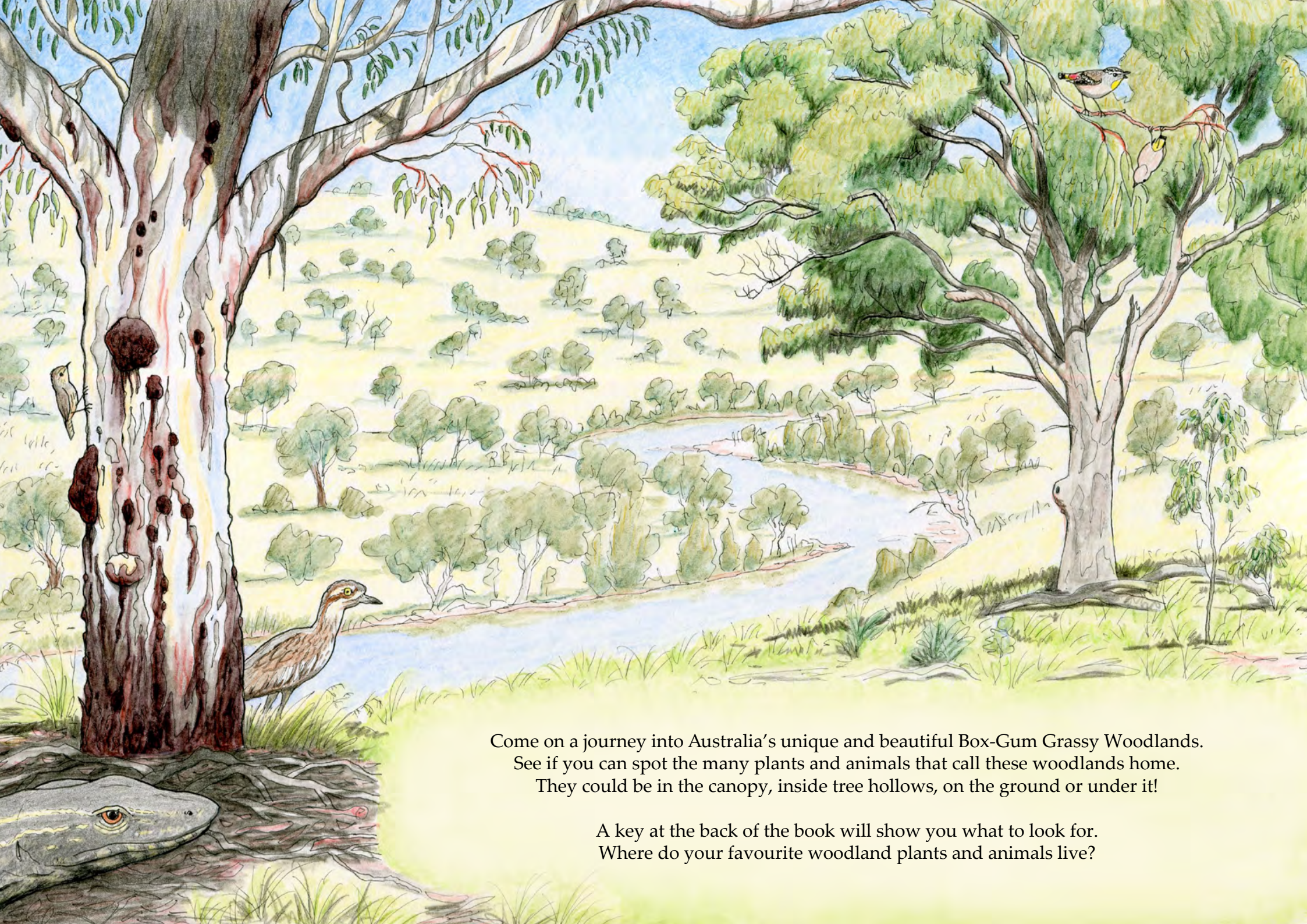
*Tricoryne elatior*  
Find on one page



Five Minute Grass  
*Tripgonella loliiiformis*  
Find on one page



Early Nancy  
*Wurmbea dioica*  
Find on 3 pages



Come on a journey into Australia's unique and beautiful Box-Gum Grassy Woodlands. See if you can spot the many plants and animals that call these woodlands home. They could be in the canopy, inside tree hollows, on the ground or under it!

A key at the back of the book will show you what to look for. Where do your favourite woodland plants and animals live?